

Ronald Reagan Presidential Library
Digital Library Collections

This is a PDF of a folder from our textual collections.

Collection: Speakes, Larry: Files
Folder Title: Satellite Dish at White House:
CNN + Turner Broadcasting [April-July 1982]
Box: OA 13879

To see more digitized collections visit:

<https://reaganlibrary.gov/archives/digital-library>

To see all Ronald Reagan Presidential Library inventories visit:

<https://reaganlibrary.gov/document-collection>

Contact a reference archivist at: reagan.library@nara.gov

Citation Guidelines: <https://reaganlibrary.gov/citing>

National Archives Catalogue: <https://catalog.archives.gov/>

MEMORANDUM

THE WHITE HOUSE

WASHINGTON

April 22, 1982

MEMORANDUM FOR ED HICKEY

FROM: Larry Speakes

Ed, we would like to proceed with the project referred to in the attached correspondence as quickly as possible. WHCA Operations advises they need approval from the Military Office before they can act. Is there some way your office can task them with this fairly soon?

Many thanks.

Attachments

*JS memo to Ed Jr
direct*



WASHINGTON CORPORATE OFFICE:
2133 WISCONSIN AVENUE, N.W. / WASHINGTON, D.C. 20007 / (202) 298-7433

April 21, 1982

Mr. Larry Speakes
Deputy Press Secretary
The White House
Washington, DC 20500

Dear Larry:

In reference to the conversation you, Ted and I had concerning providing Cable News Network to the White House, please find attached satellite site surveys. These surveys were done under the supervision of Al Sherowsky with the White House Communications Office.

I would appreciate you getting together the powers that be and letting me know what arrangements are necessary to get this job completed and CNN into the White House.

Ted will be in town and in fact is scheduled to meet briefly with Jim Baker tomorrow morning. I will call you while we are at the White House and maybe we can get together to chat.

Looking forward to hearing from you.

With best wishes

Sincerely,

A handwritten signature in dark ink, appearing to read "G. Breece", is written over the typed name.

George W. Breece
Vice President

GWB:pk
Attachments

P.S. How about those Braves, 12-0!



128-1021 S. BARTON ST., ARLINGTON, VA. 22204 (703) 521-5844

April 20, 1982

Mr. George Breece
Cable News Network
2133 Wisconsin Avenue, N.W.
Washington, D.C. 20007

Dear Mr. Breece:

I am pleased to inform you that we have finally found a feasible site for locating a satellite earth station at the White House.

After testing seven locations on the Executive Office Building roof, we determined that the AT&T microwave loop passing directly through the entire area effectively eliminated the roof as a prospective site.

Having exhausted the possibility of the roof as a site, I requested that we be given the permission to test the area near the National Park Service maintenance station on the southwest lawn of the White House. There we found two sites where we received high quality satellite signals and which are very well hidden from all views.

Please find enclosed site survey reports and a data sheet on site recommendations.

We look forward to completing this project for you as soon as you are able to give us the authorization.

Sincerely,

A handwritten signature in cursive script that reads "Peter C. Foley".

Peter C. Foley, President

Enclosures

PCF:mv



128-1021 S. BARTON ST., ARLINGTON, VA. 22204 (703) 521-5844

April 20, 1982

SITE SURVEY REPORT

Site Name: White House, Southwest Lawn, National Park Service
(NPS) Maintenance Area

Date: April 19, 1982

Engineer: Peter C. Foley

Client's Officials on Site: Ron Hacker, White House Communica-
tions Agency (Tel. 395-4125)

Satellite Arc Clearance: Limited to Satcom F-3 (131° West)

Equipment Utilized:

Luly 12-foot Umbrella Parabolic Antenna (39 dB Gain at
4 GHz)
Gardiner 4100 Satellite Receivers
Automation Techniques GLR-500 Satellite Receiver with
70 MHz IF Loop
120°, 100°K Amplica LNAs
4 GHz Bandpass Filter
60 MHz, 80 MHz IF Traps
Panasonic Monitor
Fluke DMM with RF Head
Associated Belden Cables, Amphenol Connectors

Site Description: Two sites at NPS garage; see Figure 1.

Evaluation:

Site 1 (see Figure 1) is on the roof of the NPS garage; site
2 is on the southeast corner of the garage on the lawn.

Both sites are feasible for high quality reception of video/audio
services from RCA Satcom F3R (main cable TV satellite). They
are both well hidden from views from most all angles, and
provide shelter from severe microwave interference present on
all seven roof sites tested.

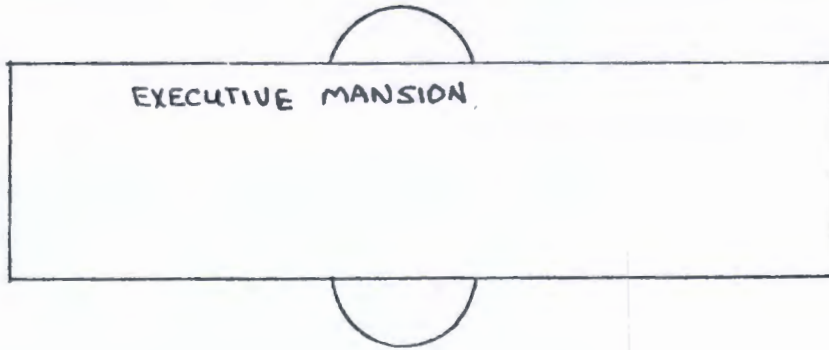
Because there are many trees in the area, both sites are well
"camouflaged," but the number of trees also limits placement of
the antenna to exact test sites. (A tree in line of sight with
the satellite will prevent reception.)

If you consider both aesthetics and reception, these are two
prime sites.



128-1021 S. BARTON ST., ARLINGTON, VA. 22204 (703) 521-5844

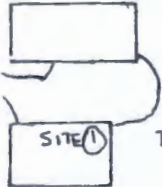
April 20, 1982



ST
JOB-ENTRANCE



TENNIS
COURT



TWO NATIONAL PARK SERVICE GARAGES

SITE (1)
TE (2)



FOUNTAIN

WHITE HOUSE SOUTHWEST LAWN,
SITES TESTED FOR TVRO EARTH STATION



128-1021 S. BARTON ST., ARLINGTON, VA. 22204 (703) 521-5844

April 20, 1982

SITE RECOMMENDATIONS: EOB/WHITE HOUSE EARTH STATION

Site Name: White House, Southwest Lawn, National Park Service
(NPS) Maintenance Area

Engineer: Peter C. Foley

Aesthetic Considerations:

The beauty and artistic harmony of the White House grounds will not be compromised by an earth station correctly installed at either NPS site. If the White House prefers the antenna to be hidden from view, we can "hide" it using inexpensive, yet effective methods.

We could install a stockade type fence around three sides of a roof mount (leaving a "window" on the southwest side for reception). We could paint the antenna green to blend in with the foliage. A few bushes could be planted on the south side of a ground mount to shield the antenna from tourists at the south sidewalk area. The dish antenna can be painted any color to reduce visibility.

Note that no trees need be cut down at either site.

Planning Considerations:

Planning for the amount of signal distribution (i.e., how many TVs will be connected to the signal) is critical when engineering an earth station antenna and electronics headend.

Operational Considerations:

There are no radiational hazards to those close to an earth station. Wind survival is normally in the 100 MPH range. Little maintenance is necessary with an antenna, unless it is motorized.

An earth station installed at the NPS garage would provide no impediments to operations.



128-1021 S. BARTON ST., ARLINGTON, VA. 22204 (703) 521-5844

April 20, 1982

SITE SURVEY REPORT

Site Name: Executive Office Building (EOB), Washington, D.C.

Date: April 13, 19, 1982

Engineer: Peter C. Foley

Client's Officials on Site: Ron Hacker, White House Communications Agency (395-4125)

Equipment Utilized:

Luly 12-foot Umbrella Parabolic Antenna (39 dB Gain at 4 GHz)
Gardiner 4100 Satellite Receivers
Automation Techniques GLR-500 Satellite Receiver with 70 MHz IF Loop
120°, 100° K Amplica LNAs
4 GHz Bandpass Filter
60 MHz, 80 MHz IF Traps
Panasonic Monitor
Fluke DMM with RF Head
Associated Belden Cables, Amphenol Connectors

Satellite Arc Clearance: Orbital Slots 83° to 135° West Clear

Site Description: Four sites on EOB roof; see Figure 1.*

Evaluation: (See Figure 1) All sites are not feasible due to severe in-band interference.

Site 1,2: Air Vent*
Site 3: Tape Facility*
Site 4: West Flag Headend
Site 5: Southwest Wing
Site 6: Southwest Corner
Site 7: Southeast Corner

* Details for sites 1,2 (Air Vent) and site 3 (Tape Facility) are covered in Site Survey Report of March 16, 1982.

(more)



128-1021 S. BARTON ST., ARLINGTON, VA. 22204 (703) 521-5844

April 20, 1982

SITE SURVEY REPORT, Executive Office Building - page 2

Evaluation (Cont'd.):

When planning for an earth station, two interference sources can "wipe out" satellite signals of the 4 GHz (C-band) variety. First are UHF or other out-of-band signals of up to 2 GHz (such as used by military and airports). Second are the in-band type, and the source is AT&T's terrestrial microwave links. The EOB is directly in line with such a link, scattering most of the weak satellite signals (which share the same frequency with AT&T) into oblivion.

As noted by the Compucon study and verified by our test, the AT&T microwave loop which crosses the EOB (see Figure 1) is so strong as to effectively eliminate the whole site from consideration for a C-band earth station.

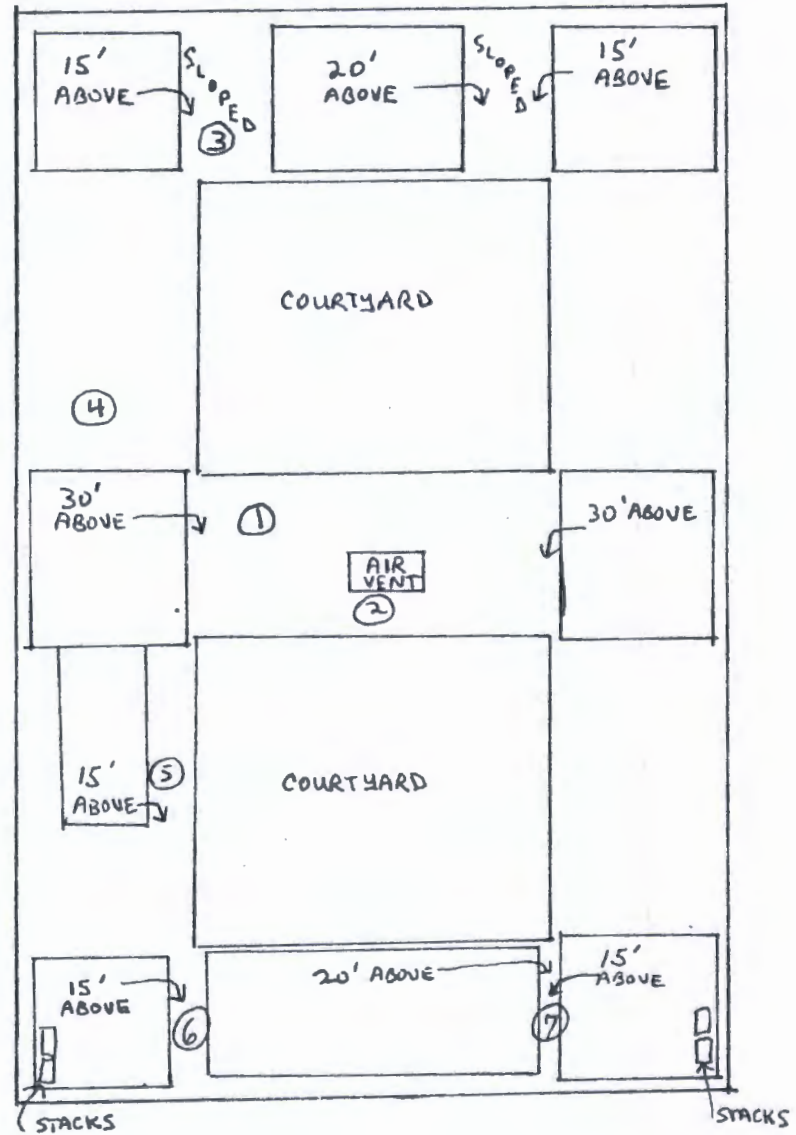
Before we set up our 12 foot parabolic antenna, we confirmed the strength of the interference by turning on the receivers and noting audio and video from the AT&T towers on our monitor. To begin with, pictures could never appear on the monitor without connection to the antenna unless there were a severe case of terrestrial microwave interference. After connecting the antenna to the receivers, we continued to receive only terrestrial microwave signals; satellite signals could not break through.

Our conclusion is that the EOB should be eliminated from further consideration as a C-band earth station site.



128-1021 S. BARTON ST., ARLINGTON, VA. 22204 (703) 521-5844

SITE SKETCH
(NOT TO SCALE)



EXECUTIVE OFFICE BUILDING,
SITES TESTED FOR TVRO EARTH STATION

THE WHITE HOUSE

WASHINGTON

May 3, 1982

MEMO TO LARRY SPEAKES *D. E. J.*
FROM EDWARD V. HICKEY, JR. *for*

Regarding your memo of April 22nd on the satellite site survey that was done by Potomac Satellite Systems. We have queried WHCA on this again and if John Rogers has no problem with it, we will do it.

May 11, 1982

MEMORANDUM FOR JOHN F. W. ROGERS
FROM DENNIS E. LeBLANC
SUBJECT Alternate location of CNN satellite receiver

Larry Speakes has sent us a memo from Turner Broadcasting, stating that the engineering firm they hired to see if the OEOP would be an acceptable place to put a satellite receiver, which proved negative, has identified an alternate location on the White House grounds.

With WHCA accompanying their engineers, they found two sites near the National Parks Service maintenance area in which high quality satellite signals were received.

I believe our next step is for you to determine as to whether or not is acceptable to put these receivers on the grounds. I would like to point out it is Larry Speakes' office that is requesting this service not WHCA's. We would simply supervise the installation and hook up to the White House system.

Please let us know what your decision is so we can proceed or not.

cc: Larry Speakes

THE WHITE HOUSE

WASHINGTON

May 20, 1982

MEMORANDUM FOR DENNIS LeBLANC

FROM: Larry Speakes

Thanks for following up with John Rogers on locating the CNN satellite receiver on the White House lawn.

I will relay the information to CNN, but meanwhile it would be good to get a reason from John Rogers on why the receiver cannot be located on the White House lawn.

THE WHITE HOUSE
WASHINGTON

May 18, 1982

MEMO TO LARRY M. SPEAKES
FROM DENNIS E. LeBLANC
SUBJECT CNN Satellite Receiver

As you can see, the Office of Administration has turned this down. If CNN is still pressing maybe their engineers should re-contact WHCA and survey the other sites mentioned by John Rogers.

THE WHITE HOUSE

WASHINGTON

May 17, 1982

MEMORANDUM FOR: DENNIS LeBLANC

FROM: JOHN F. W. ROGERS
DEPUTY ASSISTANT ~~TO~~ THE PRESIDENT
FOR MANAGEMENT

SUBJECT: ALTERNATIVE LOCATION OF CNN SATELLITE RECEIVER

In response to your May 11, 1982 memorandum, it will not be possible to locate the CNN satellite receiver anywhere on the grounds of the White House.

I would recommend that they continue to examine alternative locations such as the Widner Building or the New Executive Office Building.

Thank you for keeping me informed.

THE WHITE HOUSE

WASHINGTON

July 14, 1982

MEMORANDUM TO JOE HOLMES

FROM: Larry Speakes

I need your help. We've been struggling for a year now with the Military Office, WHCA, and John Rogers trying to get Cable News on our White House system. Ted Turner has offered a free satellite receiver but everytime we get close to a deal we get cut off at the pass.

Let's sit down and talk and I'll show you my file, and maybe you can help me shake this loose. It would be a heck of a service to add to our system.